



LiveU Central

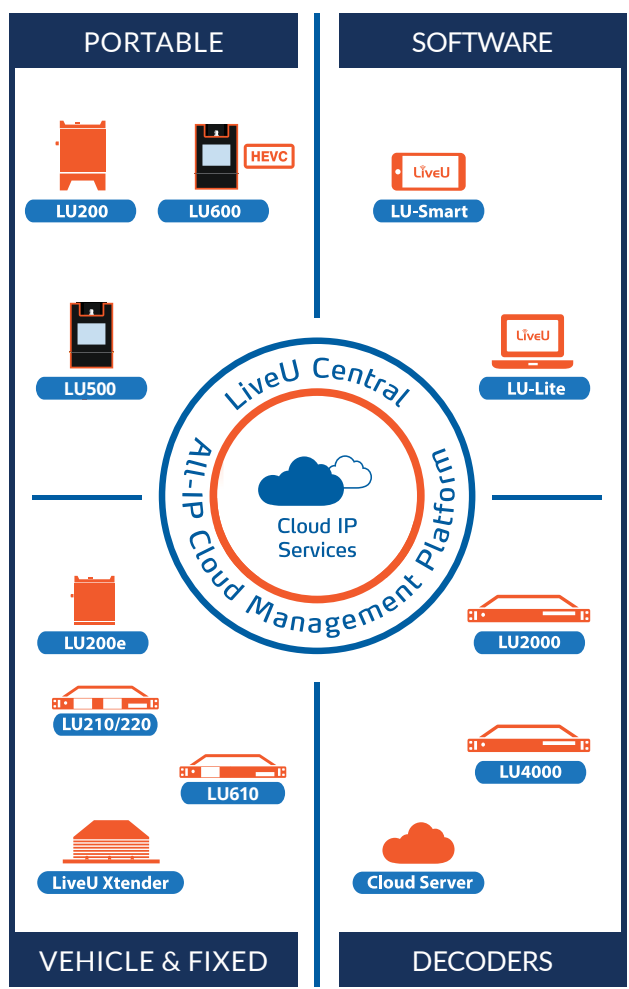
UNIFIED MANAGEMENT PLATFORM FOR EASY PREVIEW AND REMOTE CONTROL

The LiveU Central management platform allows full control and monitoring of the entire ecosystem and content via any browser-supported computer, from anywhere around the world.

Using the LiveU Central web interface you can remotely control and manage your LiveU field units and channels inventory.

- Manage unit streaming settings: mode, delay, channel selection and start/stop streaming
- View and manage unit's network interfaces, Ethernet ports, WiFi & modems including bandwidth capping capabilities
- Manage IP streaming to social media or CDNs - one click streaming to Facebook
- File Management - preview files, play to SDI or download
- Manage metadata before and after streaming
- Group & user management
- Least-cost bonding - prioritize between different interfaces (e.g. use cellular data before start using the satellite)
- Service management: MultiPoint, DataBridge

Each LiveU Central user can be assigned with unique account permissions (read only, regular, admin), enabling the management and control of a specific group of devices and channels.



REMOTE CONTROL

Manage all LiveU units from any browser or device

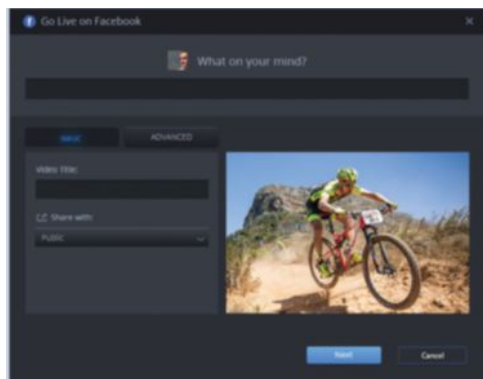
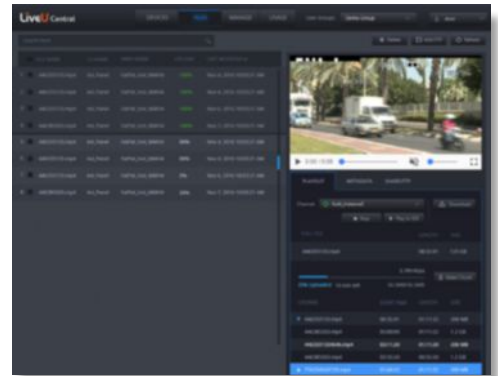


MULTIVIEW

Live preview of all incoming feeds that can be dragged and dropped to any physical server output around the world or encoded for web streaming

FILE MANAGEMENT

- Playback or export of recorded Store & Forward or FTP files, including upload management and tracking
- Files can be played to any SDI port on the server

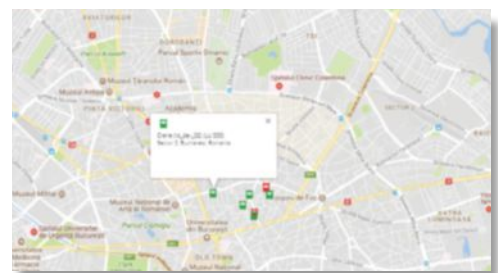


ONE-CLICK STREAMING TO FACEBOOK

Direct streaming from LiveU Central to Facebook Live, based on one-click API-based integration

GEO-LOCATION

Track the location of all LiveU units; automatic refresh when unit is online



www.liveu.tv | www.facebook.com/liveu.fans | www.twitter.com/liveu